

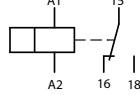
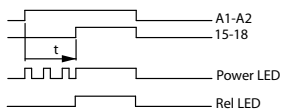
- > Accurate timing control
- > High level of interference voltage resistance
- > Multiple functions in one device - select function by number on face-mounted function dial
- > Time can be remotely set by a connection to a potentiometer



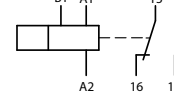
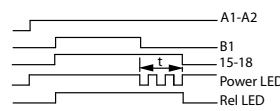
ETR4 Multi-Function Electronic Timing Relays

Description	Selectable Time Ranges			Actuating Voltage		Catalog Number	Price
	Seconds	Minutes	Hours	DC	AC		
Selectable time range, multiple functions See below for function diagrams and schematics	0.05 – 1	1.5 – 30	1.5 – 30	24 – 240	24 – 240	ETR4-69-A	
	0.15 – 3			5 – 100	400		
	0.5 – 10	15 – 300	5 – 100				
	1.5 – 30						
	5 – 100						
	15 – 300						

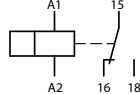
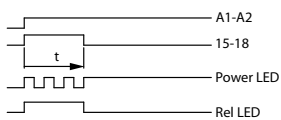
On-delayed (11)



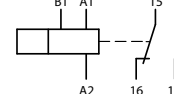
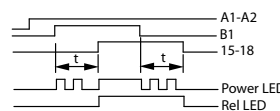
Off-delayed (12)



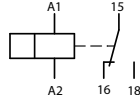
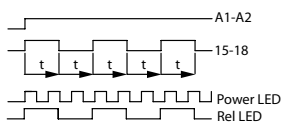
Fleeting contact on energization (21)



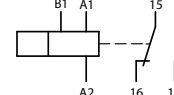
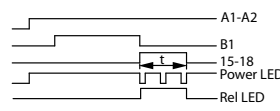
On- and Off- delayed (16)



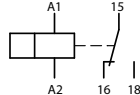
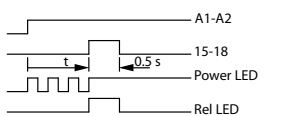
Flashing (42)



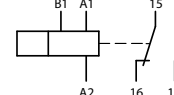
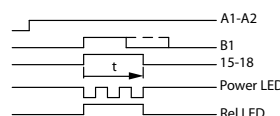
Fleeting contact on de-energization (22)



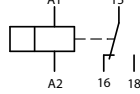
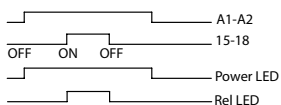
Pulse generating (81)



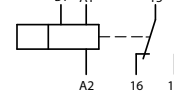
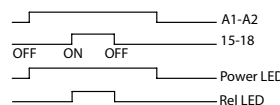
Pulse shaping (82)



On - Off



On - Off



LED Display Legend	
	Time not running; contact 15-18 closed
	Time running; contact 15-18 closed
	Time running; contact 15-18 not closed

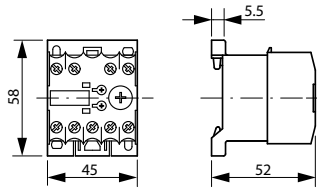
UL/CSA Rating Codes (per UL508 and CSA 22.2 No.14-95)

UL/CSA Standard	Continuous Amps	Circuit Voltage								VA	
		120VAC		240VAC		480VAC		600VAC		Make	Break
B300	5	30	3	15	1.5	-	-	-	-	3600	360

NOTE: This table represents minimum requirements to achieve a rating of B300. All Moeller series timing relays meet or exceed these standards.

Electronic Timing Relays

DILET...



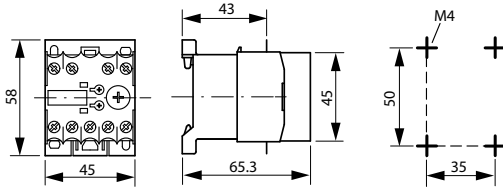
Dimensions are in millimeters.
Not intended for manufacturing purposes.



Industrial Relays

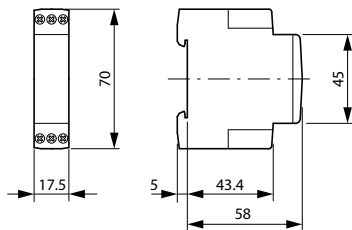
Electronic Timing Relays

DILET... with Sealable Shroud HDILE



Electronic Timing Relays

ETR2...



Electronic Timing Relays

ETR4...

